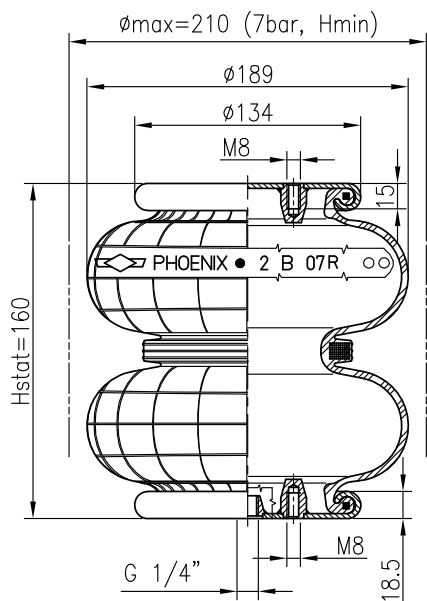



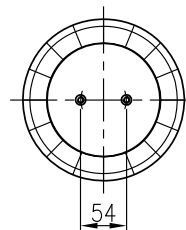
## Product information

## Cross sectionview

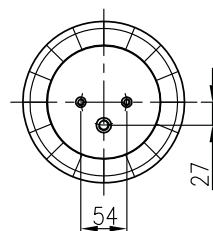


	M8
Nm	15
LB - FT	11

## Top view

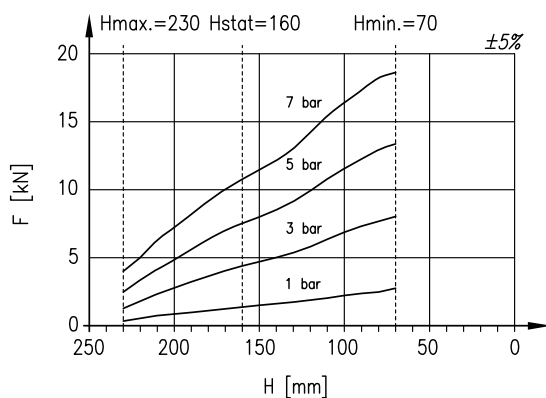


## Bottom view



## Technical data

Loading capacity max. (7 bar)	10.8 kN
Max. lifting pressure	8.0 bar
Diameter max.	210 mm
Required space Ø	240 mm
Height max.	230 mm
Height min.	90 mm
Weight	2.06 kg
Force to collapse to min. height	



## DYNAMIC DATA

Static height 160 mm

PRESSURE bar	FORCE kN	SPRING RATE N/cm	NATURAL FREQU. Hz
1	1.2	297	2.50
3	4.3	773	2.10
5	7.4	1250	2.04
7	10.8	1716	1.99