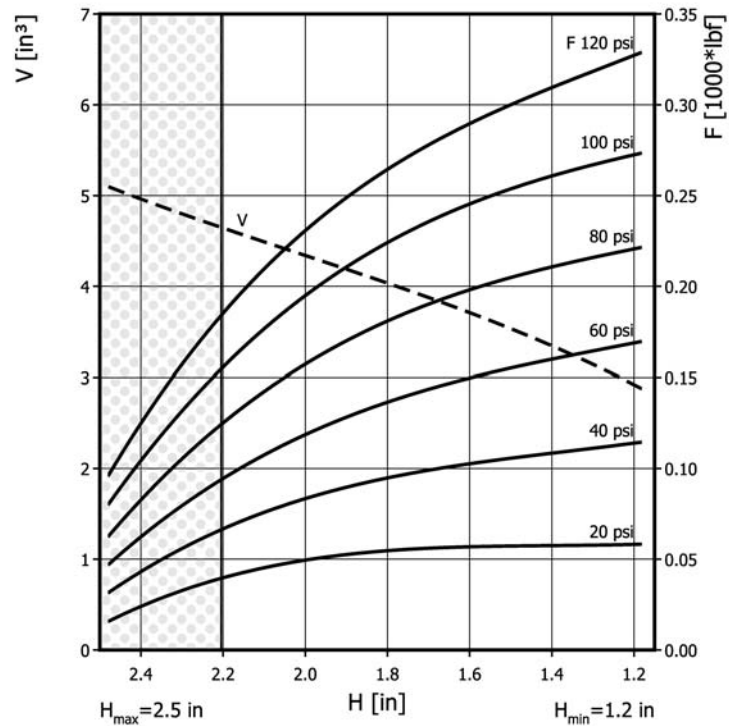
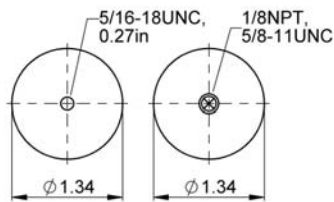
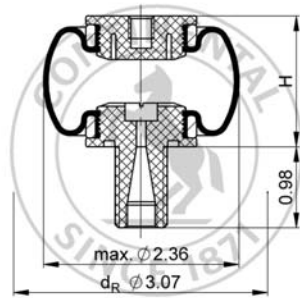


## SK 19-4

## Sleeve Type Air Actuator



Use in dotted range >2.20 in. only after consultation with ContiTech

## Purchase order data

|  |           |
|--|-----------|
| Type   | Order No. |
| with plastic connecting parts,<br>1/8 NPT air inlet<br>A = 0 in. excentrical | 63578     |

Additional types on request



Service instructions  
 5/16-18 UNC: max. 4 lbf ft  
 5/8-11 UNC: max. 10 lbf ft  
 1/8 NPT: Handtight plus one turn

## Technical data

|                            |          |
|----------------------------|----------|
| Min. pressure              | 0 psi    |
| Return force to min height | ≤ 10 lbf |
| Overall weight             | 0.2 lb   |

## Pneumatic application - static characteristic values

Force F [lbf]

| Pressure p     | [psi] | 40   | 60   | 80  | 100 | 120 | Vol. V [in <sup>3</sup> ] |
|----------------|-------|------|------|-----|-----|-----|---------------------------|
| Height H [in.] | 2.3   | 61   | 86.3 | 114 | 143 | 170 | 4.7                       |
|                | 2.0   | 80.6 | 115  | 153 | 190 | 225 | 4.3                       |
|                | 1.8   | 95.5 | 139  | 184 | 228 | 269 | 4                         |
|                | 1.5   | 106  | 155  | 204 | 252 | 299 | 3.5                       |